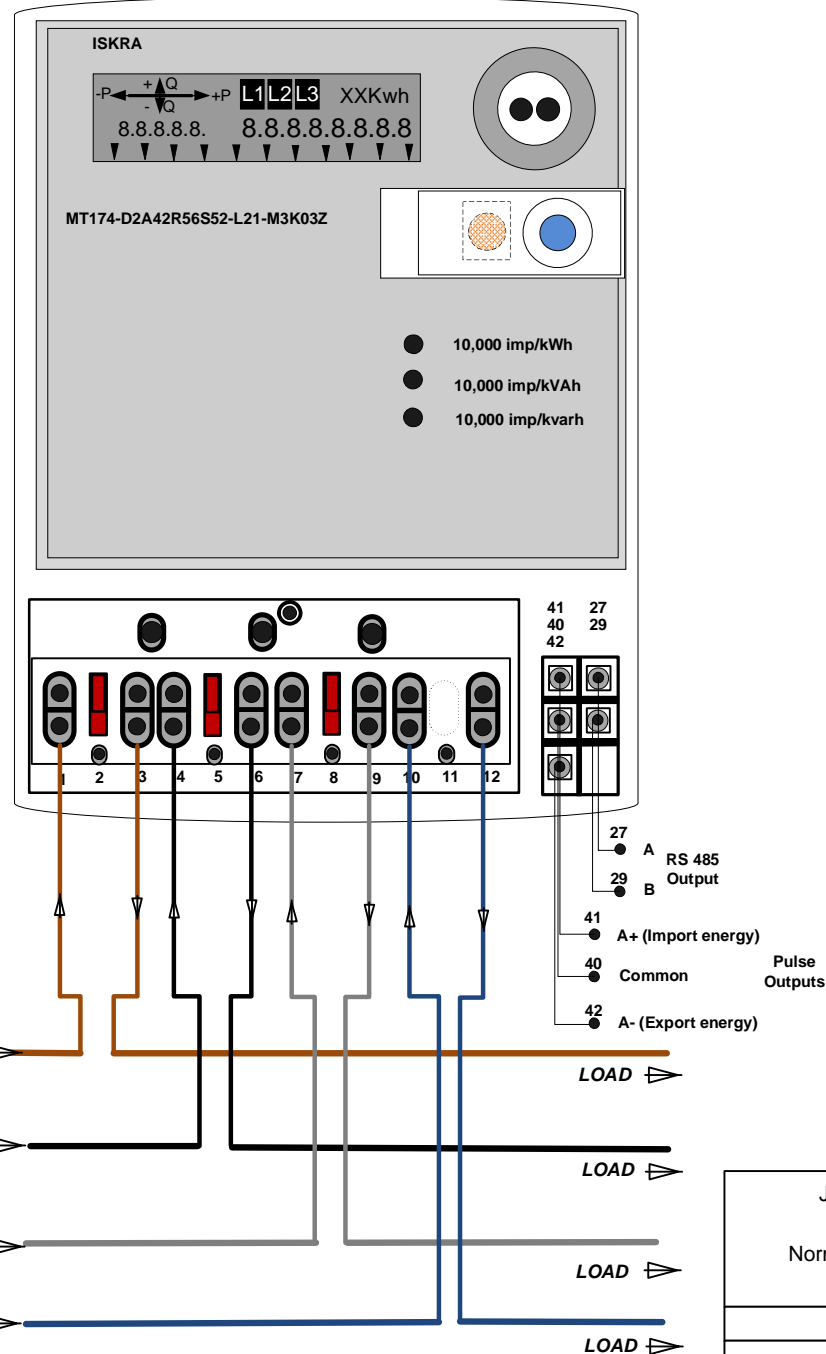


# Connections to DIRECT Connect version of ISKRAEMECO MT174 Meter



## **Meter Connection checks**

Check the L1, L2 and L3 indicators on the LCD if current conductors are connected correctly:

- L1 L2 L3 indicators are displayed - all three phase voltages are present
- Some of the L1 L2 L3 indicators are not displayed (voltage in these phases is not present). Check if current conductors of these phases are connected and/or their voltage links are in the bottom position (at direct connected meters) or find the reason for the phase voltage absence and eliminate it.
- Some of the L1 L2 L3 indicators are blinking and at the same time import energy indicator is displayed indicating that current through that metering element is reversed. In such a case change the input and the output of the corresponding current terminals.
- L1 L2 L3 indicators are blinking - reversed phase sequence that causes rotation of magnetic field in reversed direction. In this case check current conductors sequence in the meter or find the place of reversed voltage phase sequence and connect them correctly.

Note: Reversed phase sequence does not influence in energy measurement accuracy

JW Smart Meters Ltd 1, Church Lane, Normanton, West Yorkshire WF6 2DE	DESCRIPTION: Single MT174-D2A42R56S52-L21-M3K0Z Connections			
	Copyright © JW Smart Meters Ltd This drawing remains the property of JW Smart meters LTD and must not be reproduced without permission.			
Tel: 01924 891049	Date: 2016	Drawn by: S.Valentine	DWG NO	REV 1
Fax: 01924 220846	SCALE	NTS	SHEET	4 OF 6